

**Lessard-Sams Outdoor Heritage Council**  
**West Metro Minnesota Habitat Tour**  
**Outdoor Heritage Funded Program Sites**  
 August 3, 2016

The public is welcome to join any of the stops on this tour.  
 For questions or to request disability accommodations: Amanda Brazee: 651-284-6430 /  
 amanda.braze@lsohc.leg.mn

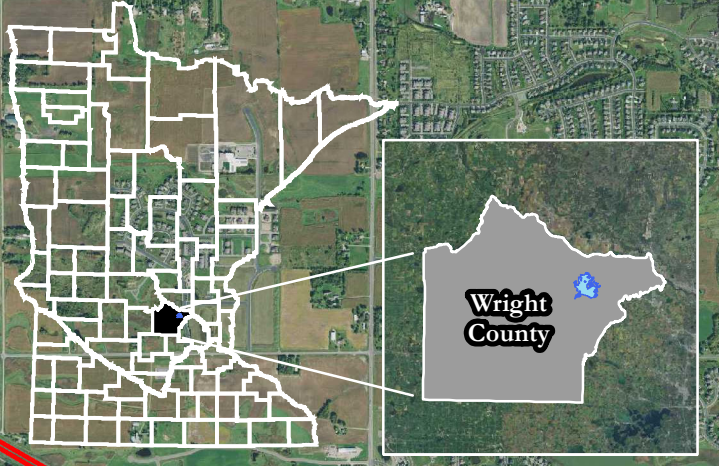
Wednesday, August 3<sup>rd</sup>, 2016

<b>Time</b>	<b>Site Name / Activity</b>	<b>Location/Notes</b>
8:30 am – 9:15 am	<b>Lake Tamarack Acquisition</b> University of Minnesota <i>ML 2013, Ch. 137, Art. 1, Sec. 2, Subd. 5(e)</i>	<b>MN Landscape Arboretum</b> 500 Arboretum Blvd, Victoria, MN 55331 North Side of Highway 5 <a href="#">44.866612, -93.628830</a>
9:30 am – 10:00 am	<b>Forest Enhancement</b> Three Rivers Park District Conservation Partners Legacy Grant Program Great River Greening <i>ML 2013, Ch. 137, Art. 1, Sec. 2, Subd. 5(j)</i>	<b>Carver Park Reserve</b> 4500 Grimm Rd Waconia, MN 55387 West Side of CR 11 <a href="#">44.883582, -93.703369</a>
11:00 am – 11:30 am	<b>Crow-Hassen Prairie Complex Restoration and Enhancement</b> Three Rivers Park District <i>ML 2014, Ch. 256, Art. 1, Sec. 2, Subd. 2(j)</i>	<b>Crow-Hassen Park Reserve</b> 12595 Park Drive Rogers, MN 55374 <a href="#">45.185175, -93.629456</a>
12:30 pm – 3:00 pm	<b>Pelican Lake Enhancement and Acquisitions</b> Ducks Unlimited Minnesota Department of Natural Resources Pheasants Forever U.S. Fish and Wildlife Service <i>ML 2009, Ch. 172, Art. 1, Sec. 2, Subd. 4(c)</i> <i>ML 2010, Ch. 361, Art. 1, Sec. 2, Subd. 2(c)</i> <i>ML 2010, Ch. 361, Art. 1, Sec. 2, Subd. 5(i)</i> <i>ML 2011, First Sp. Session, Ch. 6, Art. 1, Sec. 2, Subd. 2(h)</i> <i>ML 2012, Ch. 264, Art. 1, Sec. 2, Subd. 2(d)</i> <i>ML 2013, Ch. 137, Art. 1, Sec. 2, Subd. 2(c)</i> <i>ML 2013, Ch. 137, Art. 1, Sec. 2, Subd. 4(g)</i>	<b>Pelican Lake</b> 5298 Edmonson Ave NE Buffalo, MN 55313 <a href="#">45.227475, -93.792330</a>
3:00 pm	Depart for State Office Building	St. Paul, MN

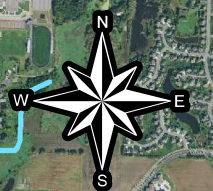
# Pelican Lake Enhancement Project - LSOHC Council Tour

August 3, 2016

T. 120 N., R. 24 W., City of St. Michael (W)  
 T. 120 N., R. 25 W., Buffalo Township  
 T. 121 N., R. 24 W., Monticello (E) Township  
 T. 121 N., R. 25 W., Monticello (W) Township  
 Wright County, MN



- Pelican Lake Outlet Route
- Alternate Pelican Lake Outlet Route (County Ditch 21/Regal Creek)
- Regal Creek Tributaries
- Crow River
- Water Control Structures
- Fish Barriers
- State Wildlife Management Areas ~1,108 Acres
- USFWS Pelican Lake Waterfowl Production Area ~1,188 Acres
- Proposed Moist Soils Wetland Restoration at 944 Feet Elevation ~39.25 Acres
- Proposed St. Michael Meadows Wetland Restoration at 926 Feet Elevation ~107 Acres
- Pelican Lake WMA Seasonal Wildlife Sanctuary (March 1 to November 30) ~102.25 Acres
- City of Saint Michael Joint Powers Agreement with MN DNR ~26 Acres
- Regal Creek Bank Stabilizations
- Crow River Bank Stabilization

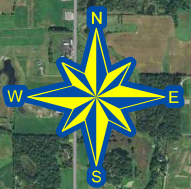
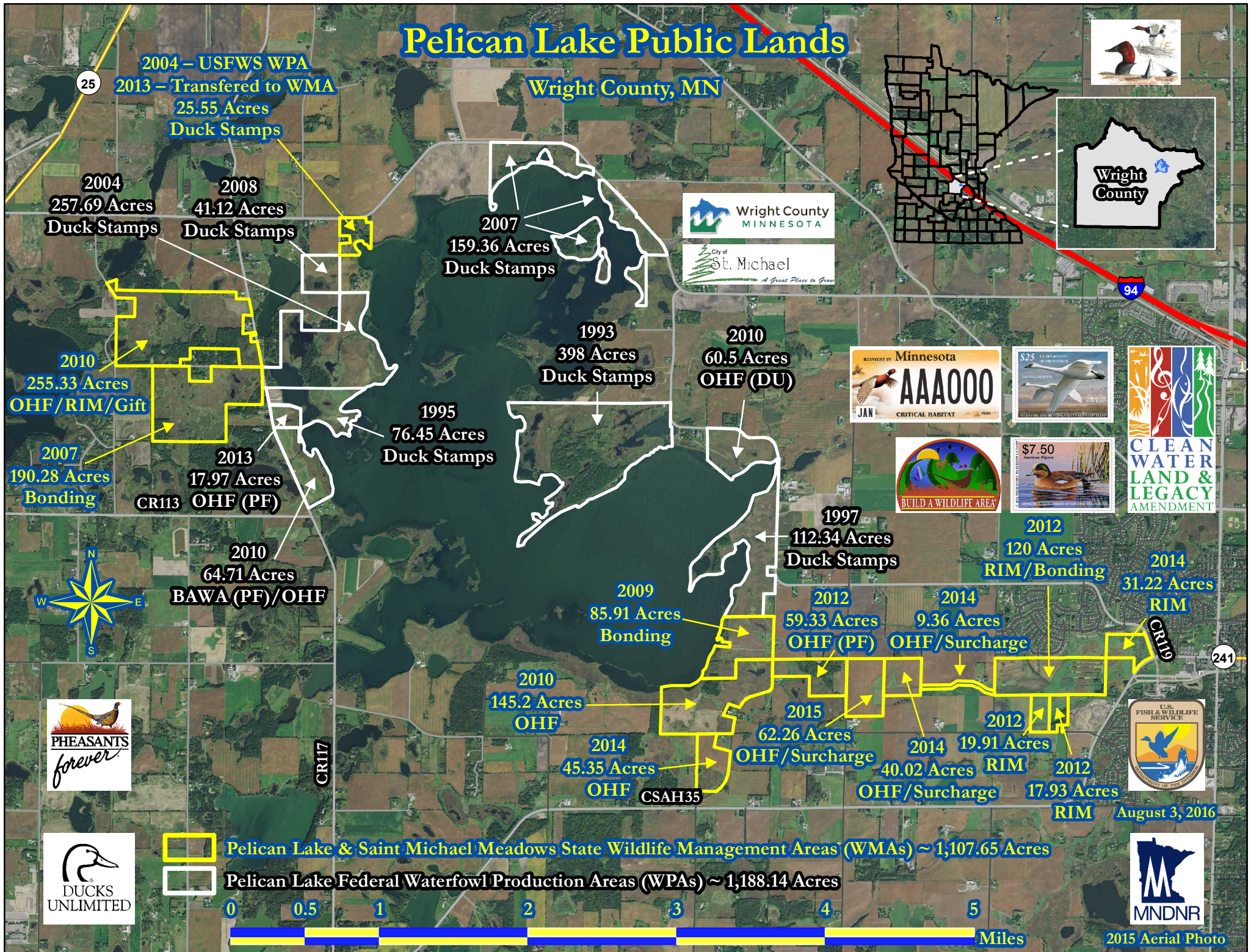


2015 Aerial Photo



# Pelican Lake Public Lands

Wright County, MN



**Pelican Lake & Saint Michael Meadows State Wildlife Management Areas (WMAs) ~ 1,107.65 Acres**  
**Pelican Lake Federal Waterfowl Production Areas (WPAs) ~ 1,188.14 Acres**



August 3, 2016

2015 Aerial Photo